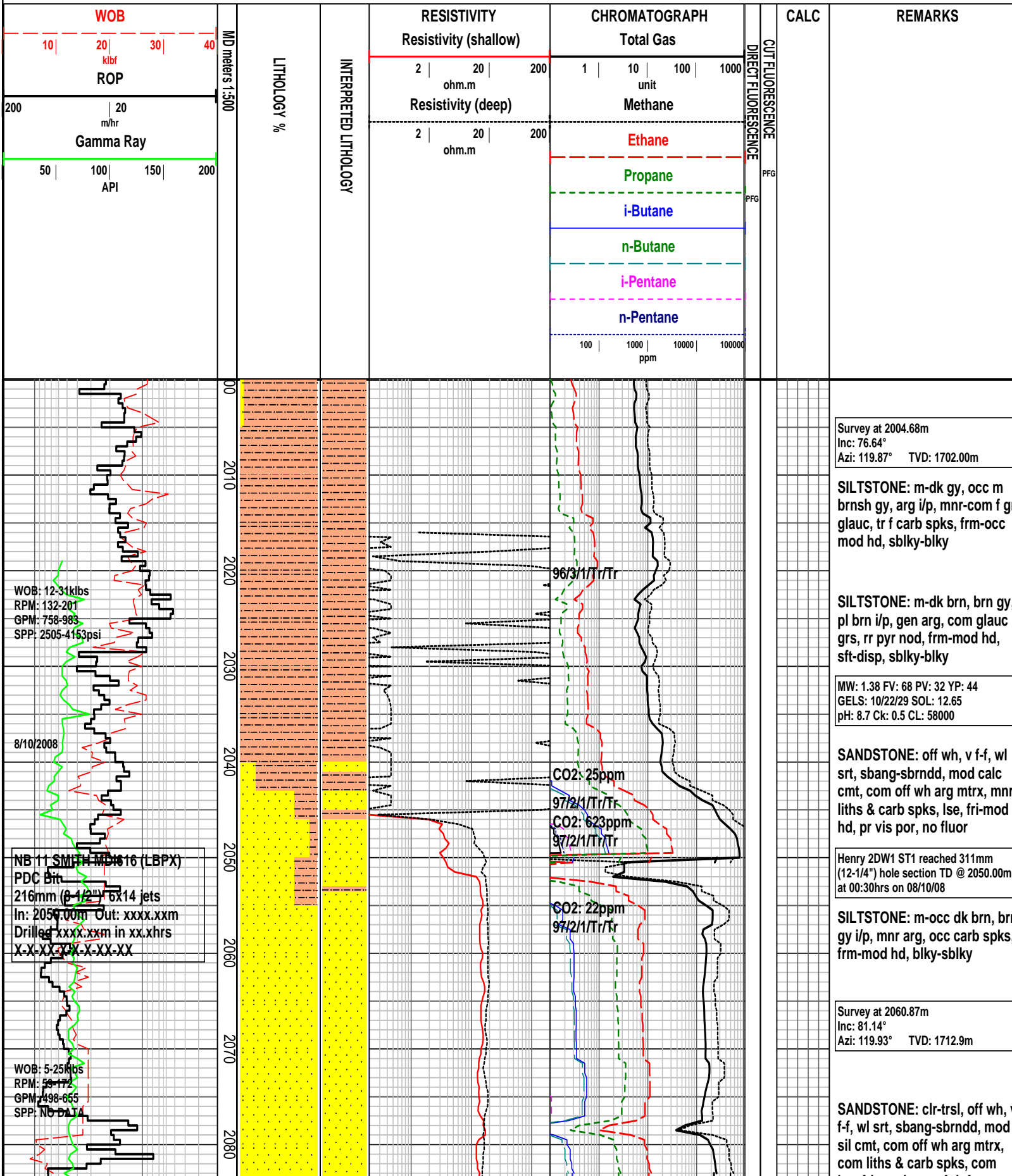


HENRY 2DW1 ST1 FORMATION EVALUATION LOG



Survey at 2004.68m
Inc: 76.64°
Azi: 119.87° TVD: 1702.00m

SILTSTONE: m-dk gy, occ m brnsh gy, arg i/p, mnr-com f gr glauc, tr f carb spks, frm-occ mod hd, sblky-blky

SILTSTONE: m-dk brn, brn gy, pl brn i/p, gen arg, com glauc grs, rr pyr nod, frm-mod hd, sft-disp, sblky-blky

MW: 1.38 FV: 68 PV: 32 YP: 44
GELS: 10/22/29 SOL: 12.65
pH: 8.7 Ck: 0.5 CL: 58000

SANDSTONE: off wh, v f-f, wl srt, sbang-sbrndd, mod calc cmt, com off wh arg mtrx, mnr liths & carb spks, lse, fri-mod hd, pr vis por, no fluor

Henry 2DW1 ST1 reached 311mm (12-1/4") hole section TD @ 2050.00m at 00:30hrs on 08/10/08

SILTSTONE: m-occ dk brn, brn gy i/p, mnr arg, occ carb spks, frm-mod hd, blkly-sblky

Survey at 2060.87m
Inc: 81.14°
Azi: 119.93° TVD: 1712.9m

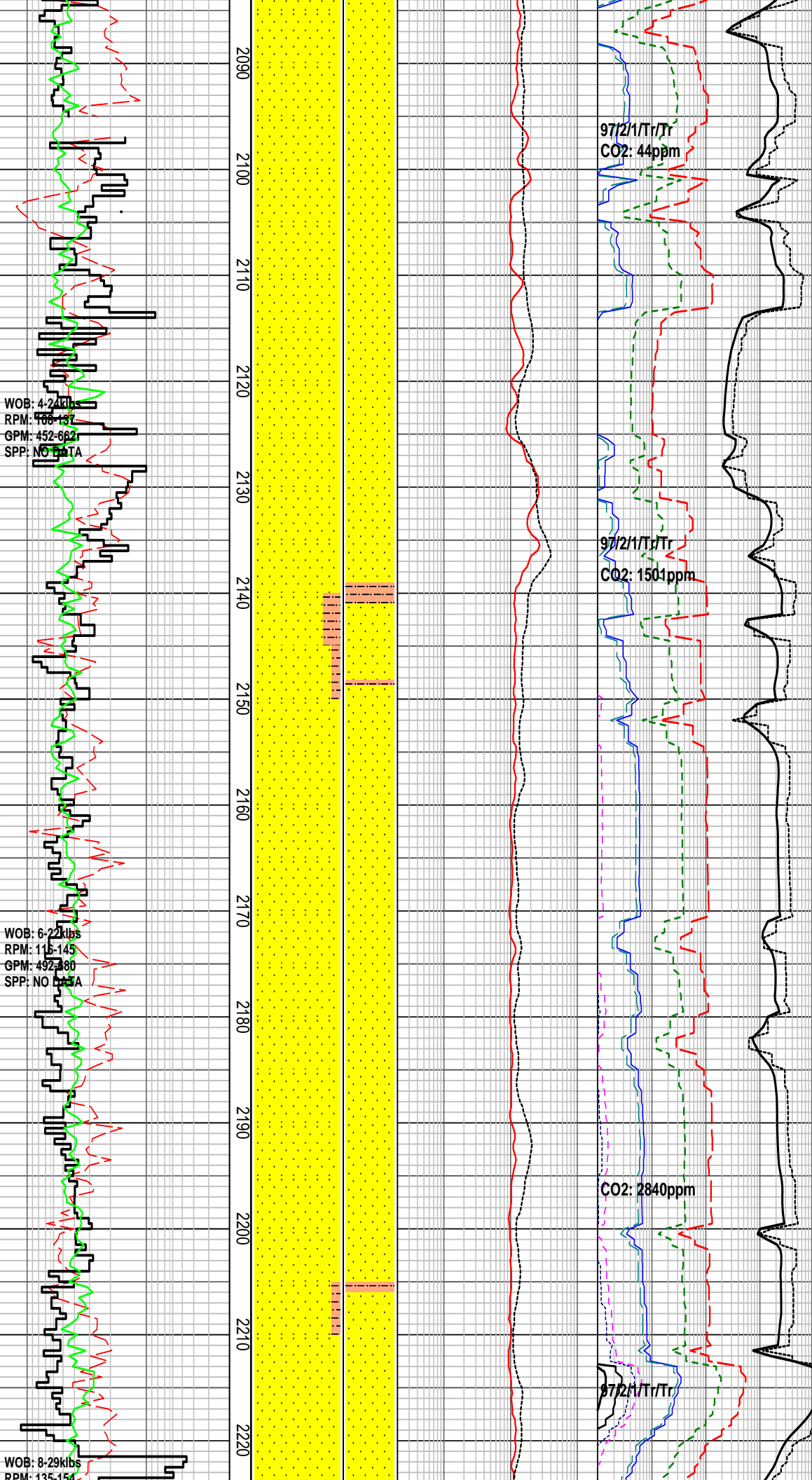
SANDSTONE: clr-trsl, off wh, v f-f, wl srt, sbang-sbrndd, mod sil cmt, com off wh arg mtrx, com liths & carb spks, com lse, fri, pr vis por, fr inf por, no

WOB: 12-31klbs
RPM: 132-201
GPM: 758-903
SPP: 2505-4153psi

8/10/2008

NB 11 SMITH MD#16 (LBPX)
PDC Bit
216mm (8-1/2") 6x14 jets
In: 2050.00m Out: xxxx.xxm
Drilled xxxx.xxm in xx.xhrs
X-X-XX-XX-X-XX-XX

WOB: 5-25klbs
RPM: 50-172
GPM: 498-655
SPP: NO DATA



lsc, m, pr vis por, n m por, no fluor

Survey at 2089.40m
Inc: 83.69°
Azi: 121.06° TVD: 1716.7m

SANDSTONE: off wh, clr-trnsl, v f-occ f, wl srt, sbang-sbrnnd, mod sil cmt, com-abd off wh arg mtrx, tr liths, mnr carb spks, com lse, fri, pr vis por, pr-occ fr inf por, no fluor

Survey at 2119.14m
Inc: 85.41°
Azi: 120.66° TVD: 1719.5m

SANDSTONE: off wh, clr-trnsl, v f-occ f, wl srt, sbang-dom sbrnnd, mod sil cmt, com-abd off wh arg mtrx, occ liths, mnr carb spks & rr frags, lse, fri, mnr mod hd, pr vis por, pr-occ fr inf por, no fluor

SILTSTONE: pl gy, occ med gy, arg, occ carb spks, v sft-frm, disp i/p, sblky, amor

Survey at 2147.97m
Inc: 86.71°
Azi: 118.39° TVD: 1721.5m

SANDSTONE: off wh, clr-trnsl, v f, f i/p, wl srt, sbang-sbrnnd, wk-mod sil cmt, com-abd off wh arg mtrx, occ-com liths, mnr carb spks & lams, lse, fri, mnr mod hd, pr vis & inf por, no fluor

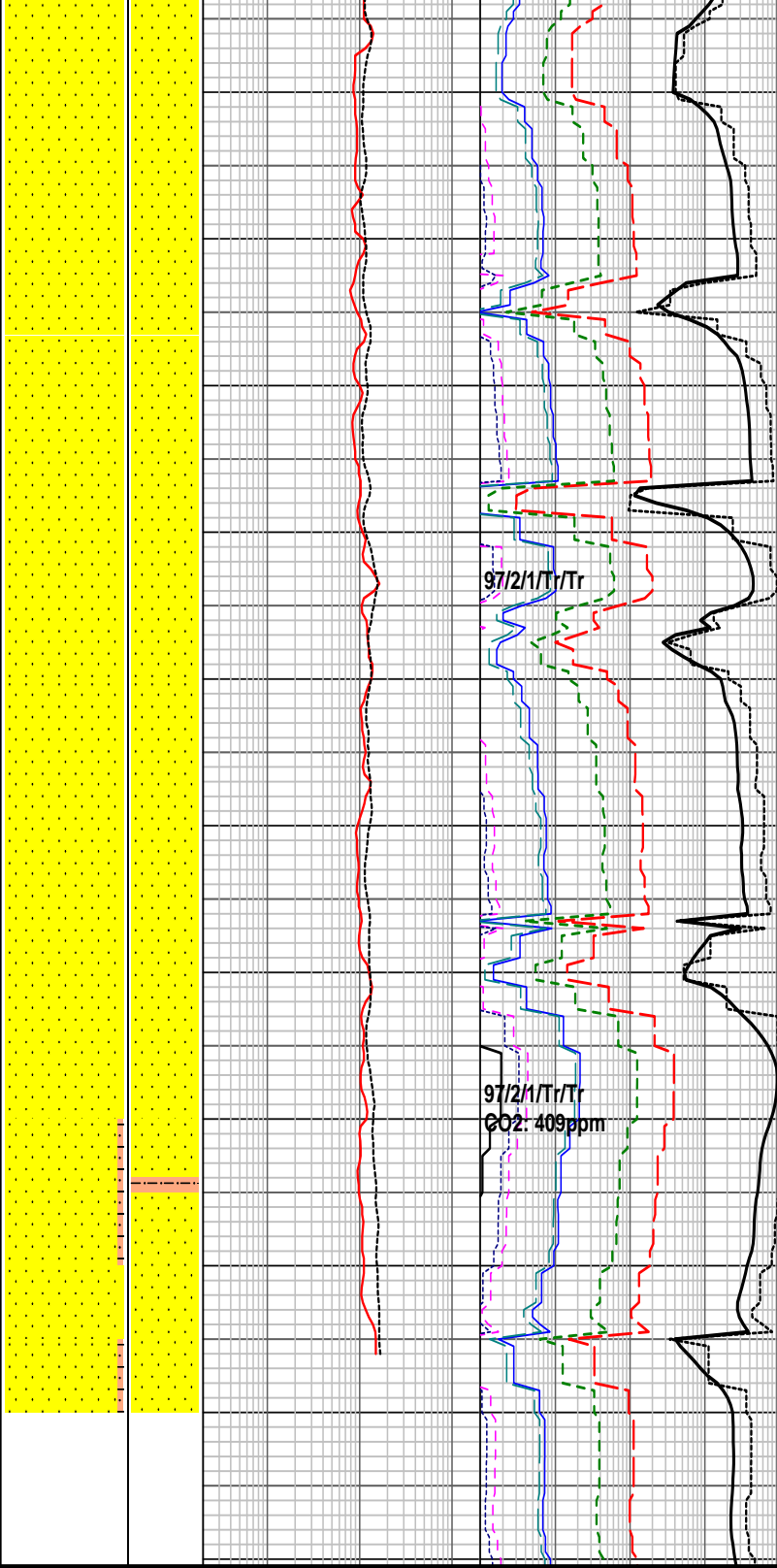
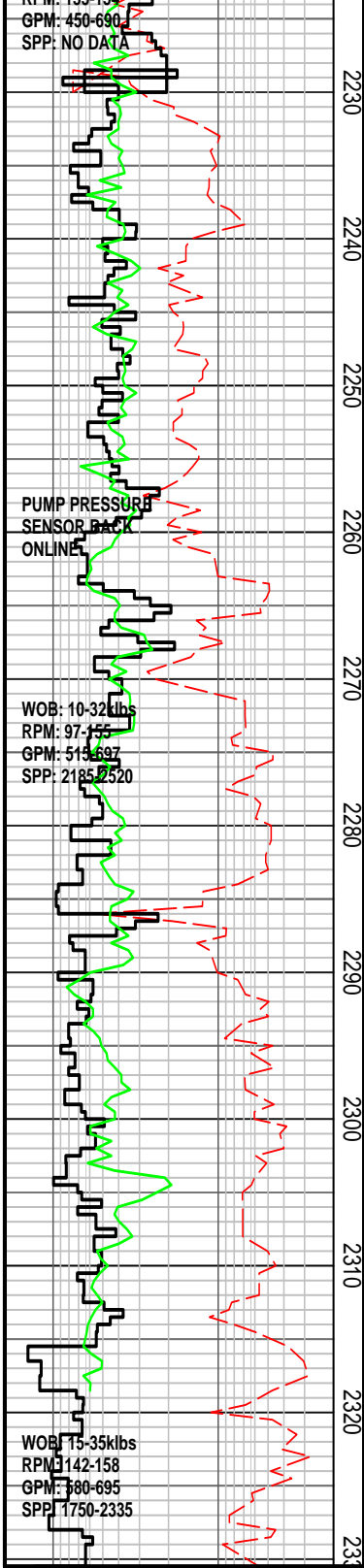
Survey at 2176.21m
Inc: 88.20°
Azi: 119.11° TVD: 1722.8m

SANDSTONE: clr-trnsl, off wh, v f-f, wl srt, sbang-dom sb-rnnd, wk-mod sil cmt, com-abd off wh arg mtrx, occ-com liths, mnr carb spks & lams, rr glauc grs, fri, mnr mod hd, pr vis & inf por, no fluor

Survey at 2203.29m
Inc: 87.18°
Azi: 118.39° TVD: 1723.8m

SILTSTONE: pl gy brn, arg, mnr carb spks, disp, v sft, amor, sblky

SANDSTONE: trnsl, clr, lt gy, v f-f gr, sbang-sbrnnd, mod wl srt, mod sil cmt, com t gy arg / slty mtrx, rr lith, tr biot, rr carb spks, fri, com dia org grs & f



SANDSTONE: trnsl, clr, lt gy, v f-f gr, sbang-sbrndd, mod wl srt, mod sil cmt, com t gy arg / slty mtrx, rr lith, tr biot, rr carb spks, fri, com dis-agg grs pr-fr inf por, no fluo

SANDSTONE: trnsl, clr, lt gy, f-med gr, sbang-pred sbrndd, mod wl srt, wk arg cmt, mnr lt gy arg mtrx, rr lith, tr biot, abd carb spks/flks & mnr frags tr nod pry, fri agg, fri agg, pred lse, fr inf por, tr min fluor

Survey at 2262.00m
 Inc: 84.35°
 Azi: 118.36° TVD: 1728.0m

SANDSTONE: trnsl, clr, lt gy, f-med gr, sbang-pred sbrndd, mod wl srt, wk arg cmt, mnr lt gy arg mtrx, rr lith, tr biot, abd carb spks/flks & mnr frags tr nod pry, fri agg, fri agg, pred lse, fr inf por, tr min fluor

Survey at 2291.17m
 Inc: 84.96°
 Azi: 118.67° TVD: 1730.7m

SILTSTONE: med gy, med brnsh gy, arg, com f carb spks, r lith, tr micmic, sft-frm, blkly

SANDSTONE: trnsl, clr, lt gy, f-med gr, sbang-pred sbrndd, mod wl srt, wk arg cmt, mnr lt gy arg mtrx, rr lith, tr biot, abd carb spks/flks & mnr frags tr nod pry, fri agg, fri agg, pred lse, fr inf por, tr min fluor

HENRY 2DW1 ST1 FORMATION EVALUATION LOG

WOB		MD meters 1:500	LITHOLOGY %	INTERPRETED LITHOLOGY	RESISTIVITY		CHROMATOGRAPH				CALC	REMARKS	
10	20				30	40	Resistivity (shallow)	Resistivity (deep)	Total Gas	Methane			Ethane
ROP				ohm.m				unit					
Gamma Ray				ohm.m				PF6					
API								PF6					

n-Pentane

n-Pentane

100 | 1000 | 10000 | 100000
ppm